



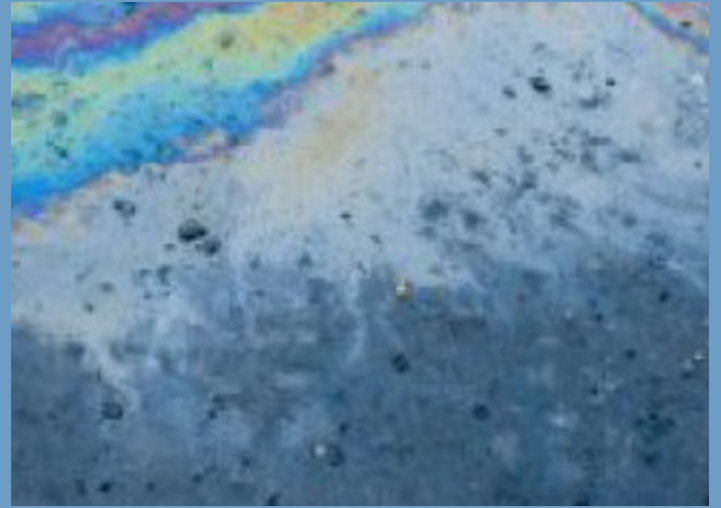
Town of Millis

GAS STATION POLLUTION PREVENTION

This fact sheet provides information, methods, and practices, or Best Management Practices (BMPs), that are recommended for Gasoline Stations. Please review these BMPs with your staff to ensure that our local waters remain as clean as possible. For more information, contact Jim McKay, Department of Public Works Director: jmckay@millis.net or 508-376-5424.

What is the issue?

Fuel dispensing areas, the air supply area, dumpsters and trash bins at gas stations have the potential to pollute stormwater runoff with heavy metals, gasoline, oil, grease, automotive fluids, and trash. Stormwater carries these pollutants to nearby lakes, streams, estuaries, and other waterbodies. Mismanaged and illicit pollutants in stormwater can harm wildlife, cause flooding and erosion, and limit recreation in public spaces.



Recommended BMPs

Controlling possible contamination at its source is the best way to prevent pollutants from ever reaching the storm water system. Here are some ways to accomplish this:

General

- Contain wash water. Do not dispose in gutter or street.
- Inspect equipment for leaks and drips; clean and maintain routinely.
- Label drains with the facility boundary to indicate whether they flow to a grease trap, sewer, or storm drain.
- Provide employee training on good housekeeping practices.
- Properly use and store industrial materials; minimize use of salt and de-icers.
- Properly manage and dispose of waste.

Fueling Area

- Use dry clean-up methods to maintain fuel dispensing areas.
- Position roof downspouts to direct stormwater away from fueling area.
- Slope pavement near fueling areas to prevent ponding.
- Install protective guards around tanks and piping to prevent spills.
- Check dispenser hoses frequently.
- Supervise fueling operations to ensure no spills occur.

Dumpster Area

- Use water-tight receptacles and keep lid closed.
- Grade the area to prevent run on stormwater.
- Install roof over the area and low containment berms around the area.
- Empty dumpsters frequently.

Spill Clean Up

- Develop and maintain a spill response plan.
- Have a supply of spill clean-up materials.
- Spot-clean leaks and drips daily.
- Use very little water when cleaning up leaks or spills.
- Keep spills from entering the street and storm drains.